

DUBAI CREEK
HARBOUR

BAYSHORE AT
CREEK BEACH

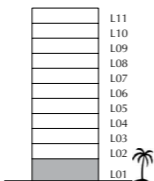
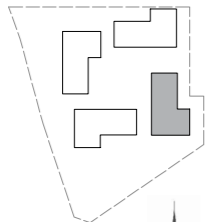
BUILDING 3

LEVEL 1

UNIT 101

1 BEDROOM

APARTMENT AREA	55.42 SQ.M.	596.54 SQ.FT.
BALCONY AREA	23.00 SQ.M.	247.57 SQ.FT.
TOTAL AREA	78.42 SQ.M.	844.11 SQ.FT.



FLOOR PLAN 1. All dimensions are in imperial and metric, and measured from finish to finish excluding construction tolerances. 2.All materials, dimensions, and drawings are approximate only. 3. Information is subject to change without notice, at developer's absolute discretion. 4. Actual area may vary from the stated area. 5. Drawings not to scale. 6. All images used are for illustrative purpose only and do not represent the actual size, features, specifications, fittings, and furnishings. 7. The developer reserves the right to make revisions / alterations, at its absolute discretion, without any liability whatsoever.

EMAAR

DUBAI CREEK
HARBOUR

BAYSHORE AT
CREEK BEACH

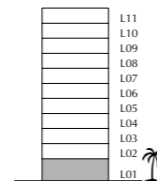
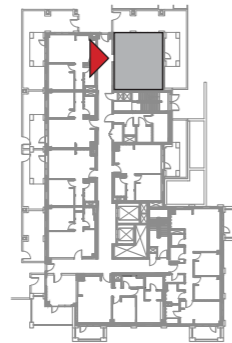
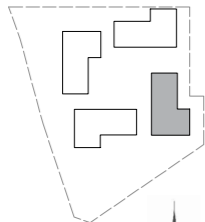
BUILDING 3

LEVEL 1

UNIT 102

1 BEDROOM

APARTMENT AREA	54.88 SQ.M.	590.72 SQ.FT.
BALCONY AREA	58.11 SQ.M.	625.49 SQ.FT.
TOTAL AREA	112.99 SQ.M.	1216.21 SQ.FT.



FLOOR PLAN 1. All dimensions are in imperial and metric, and measured from finish to finish excluding construction tolerances. 2.All materials, dimensions, and drawings are approximate only. 3. Information is subject to change without notice, at developer's absolute discretion. 4. Actual area may vary from the stated area. 5. Drawings not to scale. 6. All images used are for illustrative purpose only and do not represent the actual size, features, specifications, fittings, and furnishings. 7. The developer reserves the right to make revisions / alterations, at it's a absolute discretion, without any liability whatsoever.

EMAAR

DUBAI CREEK
HARBOUR

BAYSHORE AT
CREEK BEACH

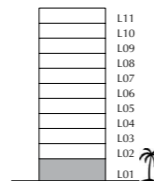
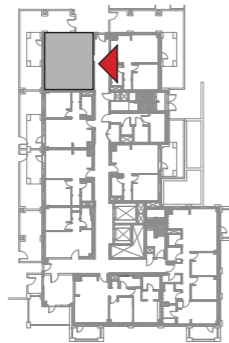
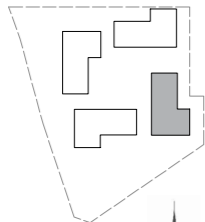
BUILDING 3

LEVEL 1

UNIT 103

1 BEDROOM

APARTMENT AREA	54.60 SQ.M.	587.71 SQ.FT.
BALCONY AREA	50.04 SQ.M.	538.63 SQ.FT.
TOTAL AREA	104.64 SQ.M.	1126.34 SQ.FT.



FLOOR PLAN 1. All dimensions are in imperial and metric, and measured from finish to finish excluding construction tolerances. 2.All materials, dimensions, and drawings are approximate only. 3. Information is subject to change without notice, at developer's absolute discretion. 4. Actual area may vary from the stated area. 5. Drawings not to scale. 6. All images used are for illustrative purpose only and do not represent the actual size, features, specifications, fittings, and furnishings. 7. The developer reserves the right to make revisions / alterations, at it's a absolute discretion, without any liability whatsoever.

DUBAI CREEK
HARBOUR

BAYSHORE AT
CREEK BEACH

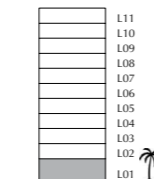
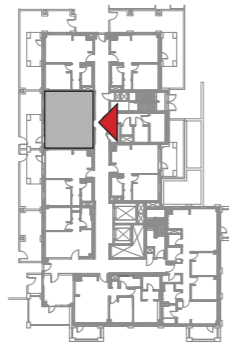
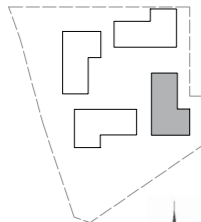
BUILDING 3

LEVEL 1

UNIT 104

1 BEDROOM

APARTMENT AREA	55.10 SQ.M.	593.09 SQ.FT.
BALCONY AREA	26.00 SQ.M.	279.86 SQ.FT.
TOTAL AREA	81.10 SQ.M.	872.95 SQ.FT.



FLOOR PLAN 1. All dimensions are in imperial and metric, and measured from finish to finish excluding construction tolerances. 2. All materials, dimensions, and drawings are approximate only. 3. Information is subject to change without notice, at developer's absolute discretion. 4. Actual area may vary from the stated area. 5. Drawings not to scale. 6. All images used are for illustrative purpose only and do not represent the actual size, features, specifications, fittings, and furnishings. 7. The developer reserves the right to make revisions / alterations, at it's a absolute discretion, without any liability whatsoever.

EMAAR

DUBAI CREEK
HARBOUR

BAYSHORE AT
CREEK BEACH

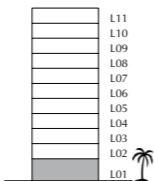
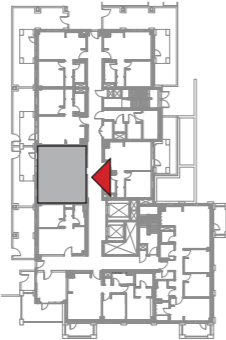
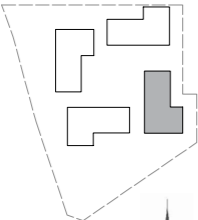
BUILDING 3

LEVEL 1

UNIT 105

1 BEDROOM

APARTMENT AREA	54.88 SQ.M.	590.72 SQ.FT.
BALCONY AREA	26.75 SQ.M.	287.93 SQ.FT.
TOTAL AREA	81.63 SQ.M.	878.65 SQ.FT.



FLOOR PLAN 1. All dimensions are in imperial and metric, and measured from finish to finish excluding construction tolerances. 2. All materials, dimensions, and drawings are approximate only. 3. Information is subject to change without notice, at developer's absolute discretion. 4. Actual area may vary from the stated area. 5. Drawings not to scale. 6. All images used are for illustrative purpose only and do not represent the actual size, features, specifications, fittings, and furnishings. 7. The developer reserves the right to make revisions / alterations, at it's a absolute discretion, without any liability whatsoever.

EMAAR

DUBAI CREEK
HARBOUR

BAYSHORE AT
CREEK BEACH

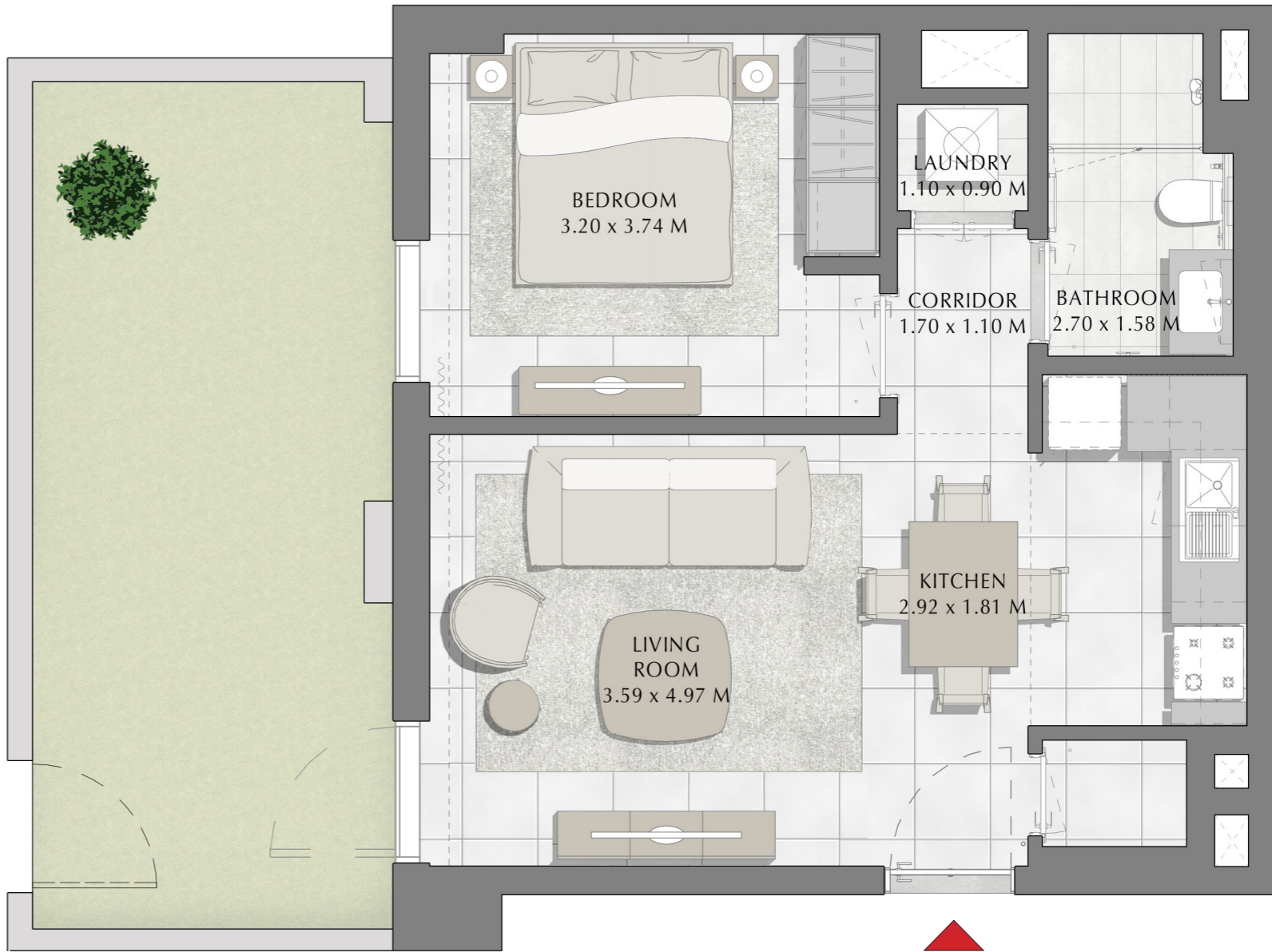
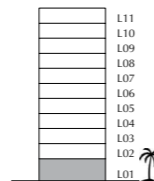
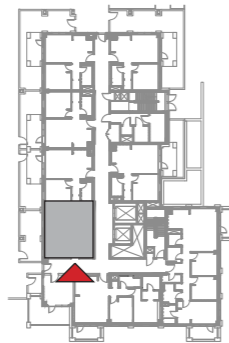
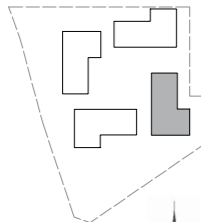
BUILDING 3

LEVEL 1

UNIT 106

1 BEDROOM

APARTMENT AREA	48.85 SQ.M.	525.82 SQ.FT.
BALCONY AREA	23.43 SQ.M.	252.20 SQ.FT.
TOTAL AREA	72.28 SQ.M.	778.02 SQ.FT.



FLOOR PLAN 1. All dimensions are in imperial and metric, and measured from finish to finish excluding construction tolerances. 2.All materials, dimensions, and drawings are approximate only. 3. Information is subject to change without notice, at developer's absolute discretion. 4. Actual area may vary from the stated area. 5. Drawings not to scale. 6. All images used are for illustrative purpose only and do not represent the actual size, features, specifications, fittings, and furnishings. 7. The developer reserves the right to make revisions / alterations, at it's a absolute discretion, without any liability whatsoever.

EMAAR

DUBAI CREEK
HARBOUR

BAYSHORE AT
CREEK BEACH

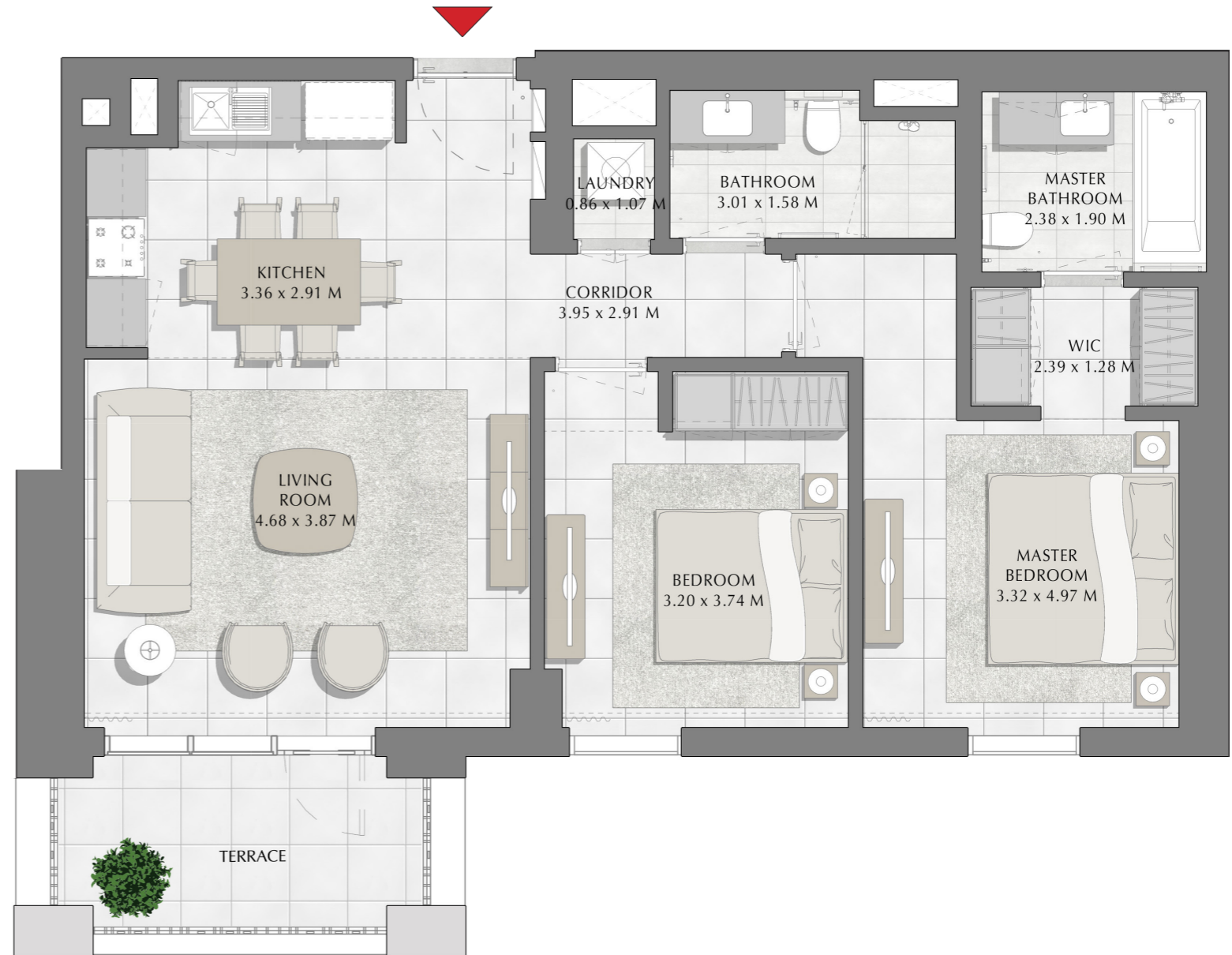
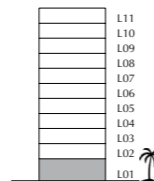
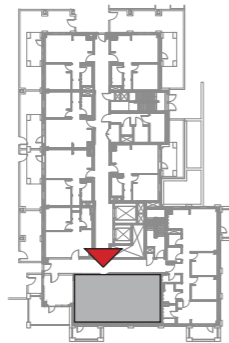
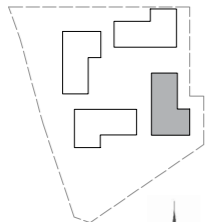
BUILDING 3

LEVEL 1

UNIT 107

2 BEDROOM

APARTMENT AREA	83.48 SQ.M.	898.57 SQ.FT.
BALCONY AREA	7.40 SQ.M.	79.65 SQ.FT.
TOTAL AREA	90.88 SQ.M.	978.22 SQ.FT.



FLOOR PLAN 1. All dimensions are in imperial and metric, and measured from finish to finish excluding construction tolerances. 2. All materials, dimensions, and drawings are approximate only. 3. Information is subject to change without notice, at developer's absolute discretion. 4. Actual area may vary from the stated area. 5. Drawings not to scale. 6. All images used are for illustrative purpose only and do not represent the actual size, features, specifications, fittings, and furnishings. 7. The developer reserves the right to make revisions / alterations, at its absolute discretion, without any liability whatsoever.

EMAAR

DUBAI CREEK
HARBOUR

BAYSHORE AT
CREEK BEACH

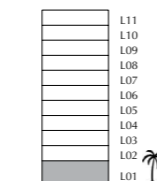
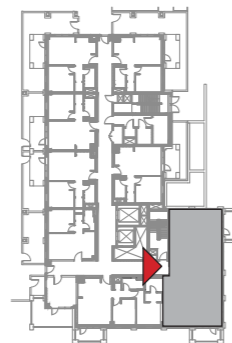
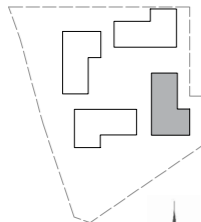
BUILDING 3

LEVEL 1

UNIT 108

3 BEDROOM

APARTMENT AREA	123.57 SQ.M.	1330.10 SQ.FT.
BALCONY AREA	14.79 SQ.M.	159.20 SQ.FT.
TOTAL AREA	138.36 SQ.M.	1489.30 SQ.FT.



FLOOR PLAN 1. All dimensions are in imperial and metric, and measured from finish to finish excluding construction tolerances. 2.All materials, dimensions, and drawings are approximate only. 3. Information is subject to change without notice, at developer's absolute discretion. 4. Actual area may vary from the stated area. 5. Drawings not to scale. 6. All images used are for illustrative purpose only and do not represent the actual size, features, specifications, fittings, and furnishings. 7. The developer reserves the right to make revisions / alterations, at it's a absolute discretion, without any liability whatsoever.

EMAAR

DUBAI CREEK
HARBOUR

BAYSHORE AT
CREEK BEACH

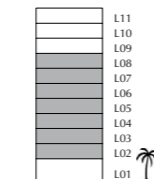
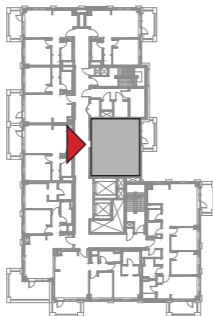
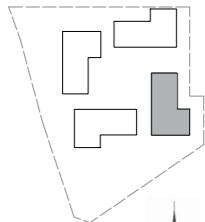
BUILDING 3

LEVEL 2, 3, 4, 5, 6, 7, 8

UNIT 201, 301, 401, 501, 601, 701, 801

1 BEDROOM

APARTMENT AREA	55.42 SQ.M.	596.54 SQ.FT.
BALCONY AREA	7.60 SQ.M.	81.81 SQ.FT.
TOTAL AREA	63.02 SQ.M.	678.35 SQ.FT.



FLOOR PLAN 1. All dimensions are in imperial and metric, and measured from finish to finish excluding construction tolerances. 2.All materials, dimensions, and drawings are approximate only. 3. Information is subject to change without notice, at developer's absolute discretion. 4. Actual area may vary from the stated area. 5. Drawings not to scale. 6. All images used are for illustrative purpose only and do not represent the actual size, features, specifications, fittings, and furnishings. 7. The developer reserves the right to make revisions / alterations, at it's a absolute discretion, without any liability whatsoever.

DUBAI CREEK
HARBOUR

BAYSHORE AT
CREEK BEACH

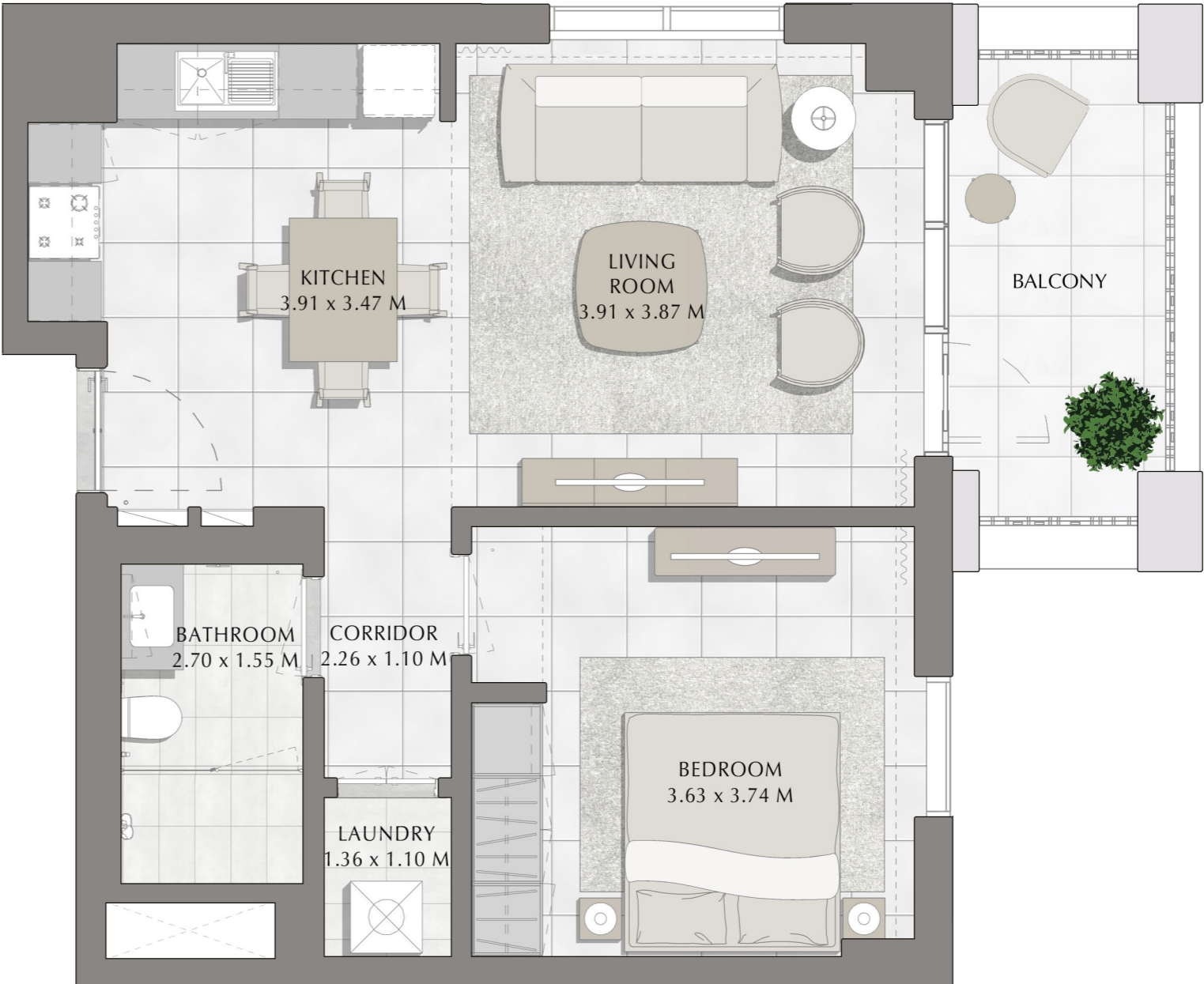
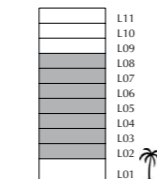
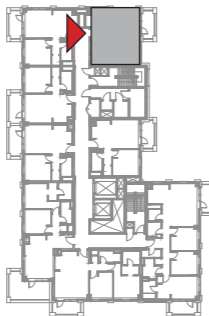
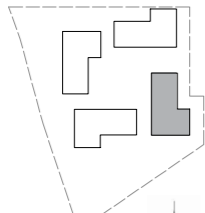
BUILDING 3

LEVEL 2, 3, 4, 5, 6, 7, 8

UNIT 202, 302, 402, 502, 602, 702, 802

1 BEDROOM

APARTMENT AREA	56.94 SQ.M.	612.90 SQ.FT.
BALCONY AREA	7.40 SQ.M.	79.65 SQ.FT.
TOTAL AREA	64.34 SQ.M.	692.55 SQ.FT.



FLOOR PLAN 1. All dimensions are in imperial and metric, and measured from finish to finish excluding construction tolerances. 2.All materials, dimensions, and drawings are approximate only. 3. Information is subject to change without notice, at developer's absolute discretion. 4. Actual area may vary from the stated area. 5. Drawings not to scale. 6. All images used are for illustrative purpose only and do not represent the actual size, features, specifications, fittings, and furnishings. 7. The developer reserves the right to make revisions / alterations, at it's a absolute discretion, without any liability whatsoever.

EMAAR

DUBAI CREEK
HARBOUR

BAYSHORE AT
CREEK BEACH

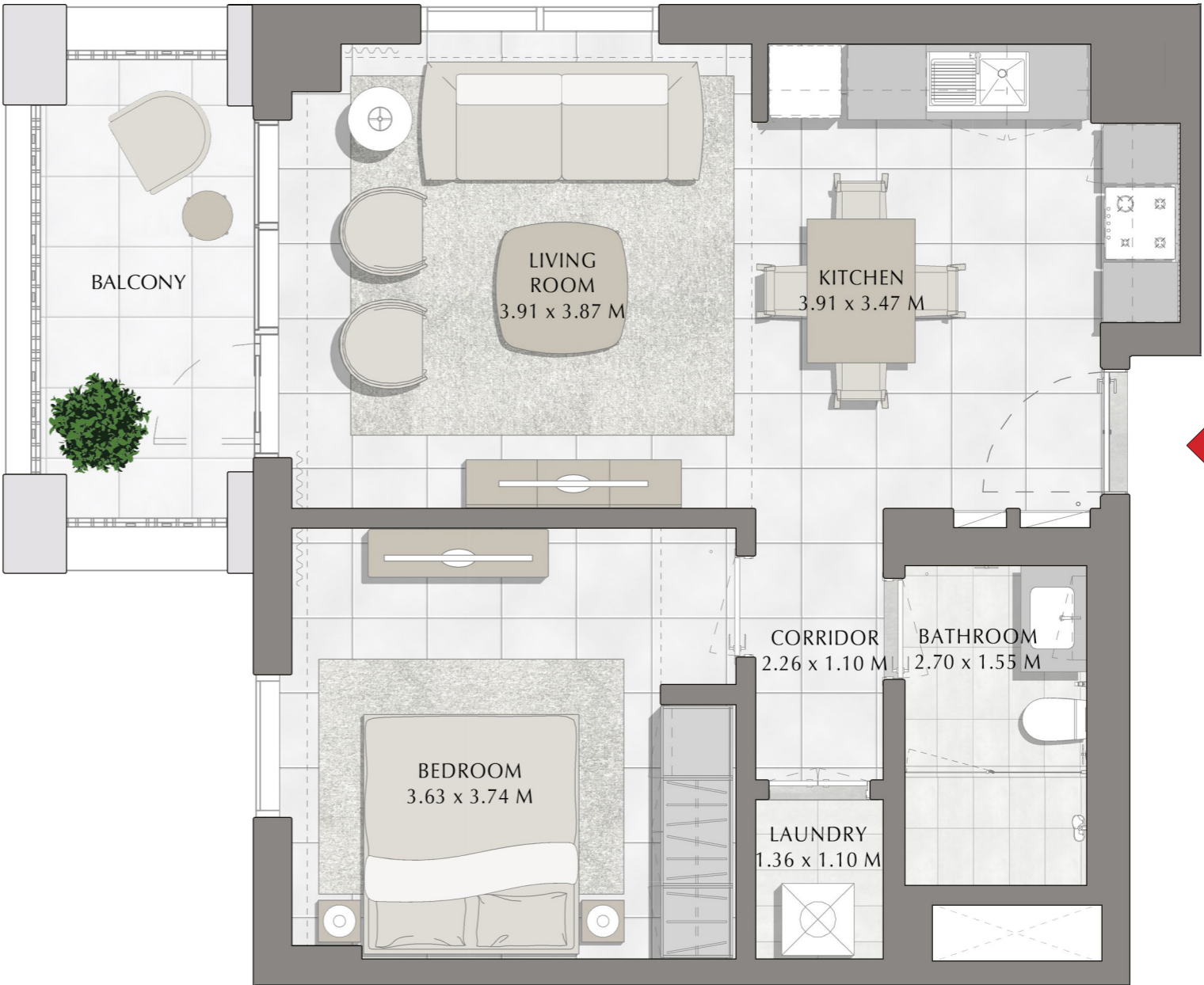
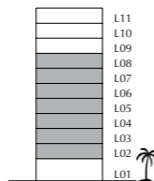
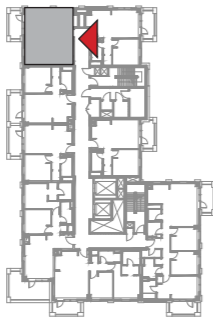
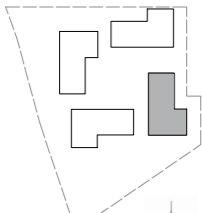
BUILDING 3

LEVEL 2, 3, 4, 5, 6, 7, 8

UNIT 203, 303, 403, 503, 603, 703, 803

1 BEDROOM

APARTMENT AREA	56.67 SQ.M.	609.99 SQ.FT.
BALCONY AREA	7.40 SQ.M.	79.65 SQ.FT.
TOTAL AREA	64.07 SQ.M.	689.64 SQ.FT.



FLOOR PLAN 1. All dimensions are in imperial and metric, and measured from finish to finish excluding construction tolerances. 2. All materials, dimensions, and drawings are approximate only. 3. Information is subject to change without notice, at developer's absolute discretion. 4. Actual area may vary from the stated area. 5. Drawings not to scale. 6. All images used are for illustrative purpose only and do not represent the actual size, features, specifications, fittings, and furnishings. 7. The developer reserves the right to make revisions / alterations, at it's a absolute discretion, without any liability whatsoever.

EMAAR

DUBAI CREEK
HARBOUR

BAYSHORE AT
CREEK BEACH

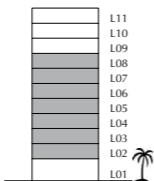
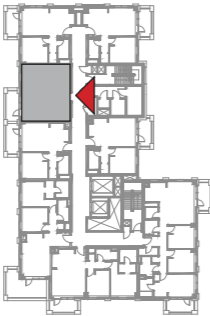
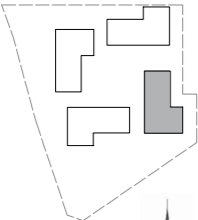
BUILDING 3

LEVEL 2, 3, 4, 5, 6, 7, 8

UNIT 204, 304, 404, 504, 604, 704, 804

1 BEDROOM

APARTMENT AREA	55.10 SQ.M.	593.09 SQ.FT.
BALCONY AREA	8.40 SQ.M.	90.42 SQ.FT.
TOTAL AREA	63.50 SQ.M.	683.51 SQ.FT.



FLOOR PLAN 1. All dimensions are in imperial and metric, and measured from finish to finish excluding construction tolerances. 2. All materials, dimensions, and drawings are approximate only. 3. Information is subject to change without notice, at developer's absolute discretion. 4. Actual area may vary from the stated area. 5. Drawings not to scale. 6. All images used are for illustrative purpose only and do not represent the actual size, features, specifications, fittings, and furnishings. 7. The developer reserves the right to make revisions / alterations, at it's a absolute discretion, without any liability whatsoever.

DUBAI CREEK
HARBOUR

BAYSHORE AT
CREEK BEACH

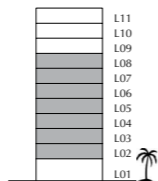
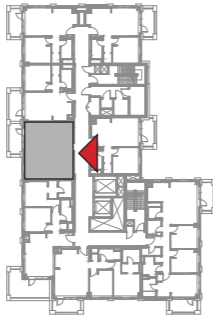
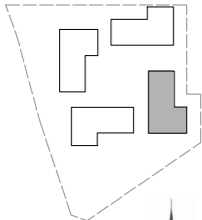
BUILDING 3

LEVEL 2, 3, 4, 5, 6, 7, 8

UNIT 205, 305, 405, 505, 605, 705, 805

1 BEDROOM

APARTMENT AREA	54.95 SQ.M.	591.48 SQ.FT.
BALCONY AREA	8.40 SQ.M.	90.42 SQ.FT.
TOTAL AREA	63.35 SQ.M.	681.90 SQ.FT.



FLOOR PLAN 1. All dimensions are in imperial and metric, and measured from finish to finish excluding construction tolerances. 2.All materials, dimensions, and drawings are approximate only. 3. Information is subject to change without notice, at developer's absolute discretion. 4. Actual area may vary from the stated area. 5. Drawings not to scale. 6. All images used are for illustrative purpose only and do not represent the actual size, features, specifications, fittings, and furnishings. 7. The developer reserves the right to make revisions / alterations, at it's a absolute discretion, without any liability whatsoever.

DUBAI CREEK
HARBOUR

BAYSHORE AT
CREEK BEACH

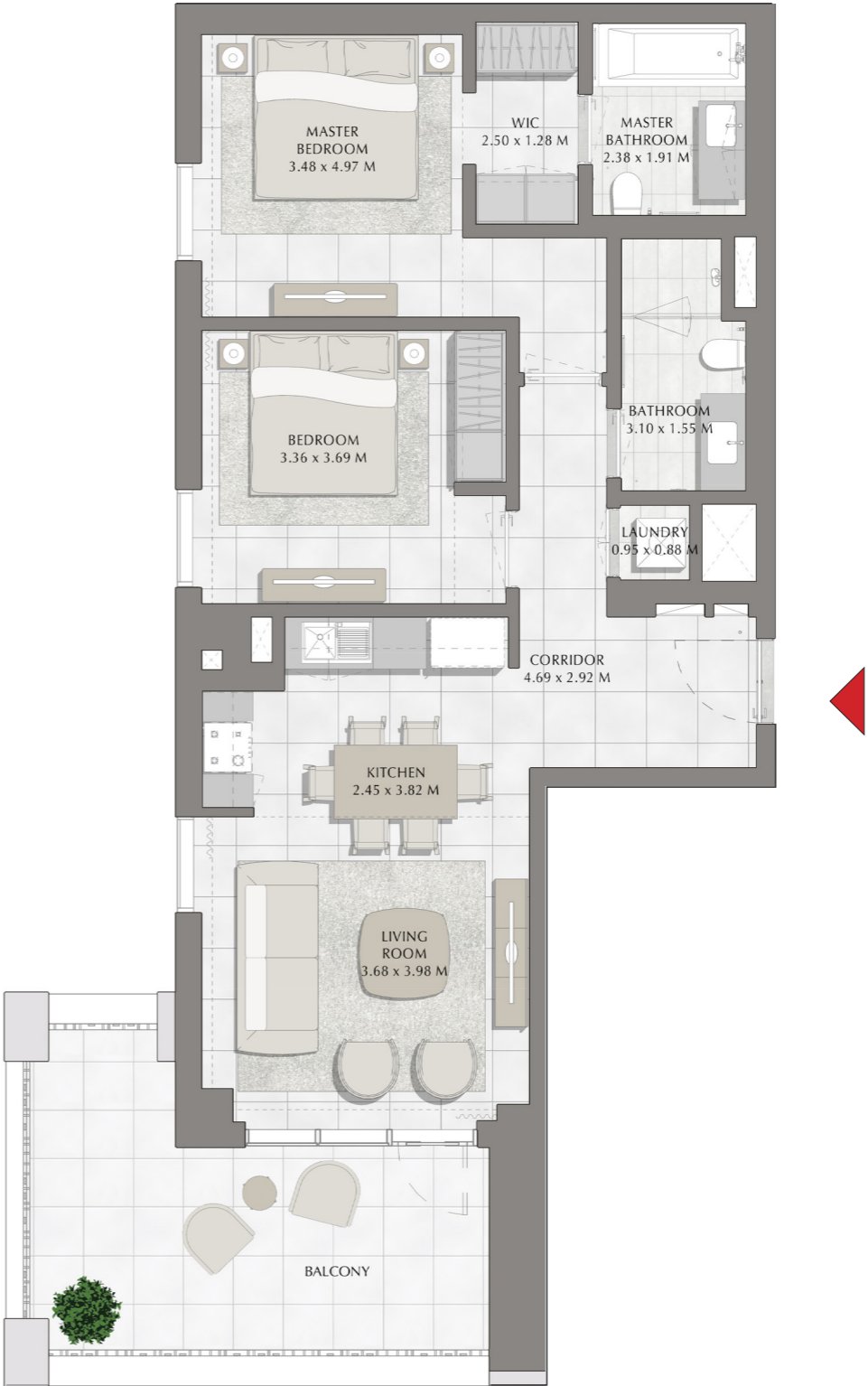
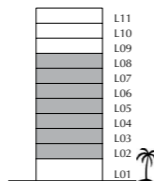
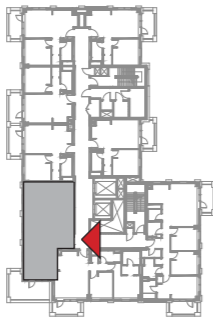
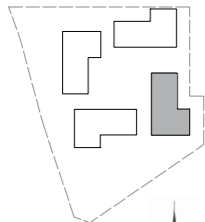
BUILDING 3

LEVEL 2, 3, 4, 5, 6, 7, 8

UNIT 206, 306, 406, 506, 606, 706, 806

2 BEDROOM

APARTMENT AREA	82.73 SQ.M.	890.50 SQ.FT.
BALCONY AREA	18.48 SQ.M.	198.92 SQ.FT.
TOTAL AREA	101.21 SQ.M.	1089.42 SQ.FT.



FLOOR PLAN 1. All dimensions are in imperial and metric, and measured from finish to finish excluding construction tolerances. 2.All materials, dimensions, and drawings are approximate only. 3. Information is subject to change without notice, at developer's absolute discretion. 4. Actual area may vary from the stated area. 5. Drawings not to scale. 6. All images used are for illustrative purpose only and do not represent the actual size, features, specifications, fittings, and furnishings. 7. The developer reserves the right to make revisions / alterations, at it's a absolute discretion, without any liability whatsoever.

DUBAI CREEK
HARBOUR

BAYSHORE AT
CREEK BEACH

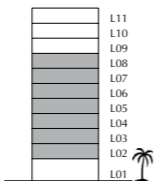
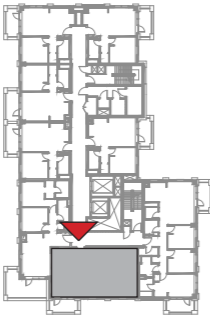
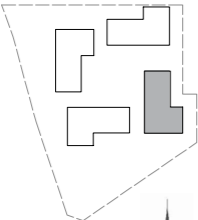
BUILDING 3

LEVEL 2, 3, 4, 5, 6, 7, 8

UNIT 207, 307, 407, 507, 607, 707, 807

2 BEDROOM

APARTMENT AREA	83.48 SQ.M.	898.57 SQ.FT.
BALCONY AREA	7.40 SQ.M.	79.65 SQ.FT.
TOTAL AREA	90.88 SQ.M.	978.22 SQ.FT.



FLOOR PLAN 1. All dimensions are in imperial and metric, and measured from finish to finish excluding construction tolerances. 2.All materials, dimensions, and drawings are approximate only. 3. Information is subject to change without notice, at developer's absolute discretion. 4. Actual area may vary from the stated area. 5. Drawings not to scale. 6. All images used are for illustrative purpose only and do not represent the actual size, features, specifications, fittings, and furnishings. 7. The developer reserves the right to make revisions / alterations, at it's a absolute discretion, without any liability whatsoever.

EMAAR

DUBAI CREEK
HARBOUR

BAYSHORE AT
CREEK BEACH

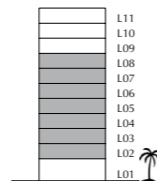
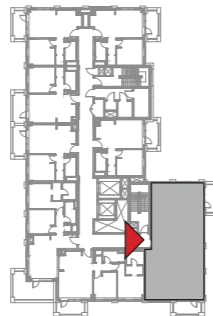
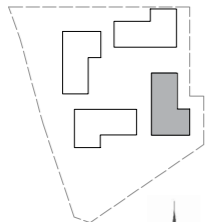
BUILDING 3

LEVEL 2, 3, 4, 5, 6, 7, 8

UNIT 208, 308, 408, 508, 608, 708, 808

3 BEDROOM

APARTMENT AREA	123.57 SQ.M.	1330.10 SQ.FT.
BALCONY AREA	14.79 SQ.M.	159.20 SQ.FT.
TOTAL AREA	138.36 SQ.M.	1489.30 SQ.FT.



FLOOR PLAN 1. All dimensions are in imperial and metric, and measured from finish to finish excluding construction tolerances. 2. All materials, dimensions, and drawings are approximate only. 3. Information is subject to change without notice, at developer's absolute discretion. 4. Actual area may vary from the stated area. 5. Drawings not to scale. 6. All images used are for illustrative purpose only and do not represent the actual size, features, specifications, fittings, and furnishings. 7. The developer reserves the right to make revisions / alterations, at its absolute discretion, without any liability whatsoever.

EMAAR

DUBAI CREEK
HARBOUR

BAYSHORE AT
CREEK BEACH

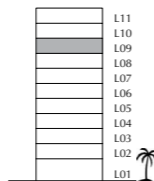
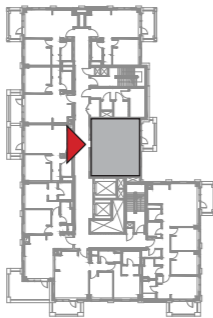
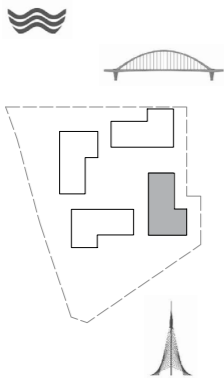
BUILDING 3

LEVEL 9

UNIT 901

1 BEDROOM

APARTMENT AREA	55.42 SQ.M.	596.54 SQ.FT.
BALCONY AREA	7.60 SQ.M.	81.81 SQ.FT.
TOTAL AREA	63.02 SQ.M.	678.35 SQ.FT.



FLOOR PLAN 1. All dimensions are in imperial and metric, and measured from finish to finish excluding construction tolerances. 2. All materials, dimensions, and drawings are approximate only. 3. Information is subject to change without notice, at developer's absolute discretion. 4. Actual area may vary from the stated area. 5. Drawings not to scale. 6. All images used are for illustrative purpose only and do not represent the actual size, features, specifications, fittings, and furnishings. 7. The developer reserves the right to make revisions / alterations, at its absolute discretion, without any liability whatsoever.

DUBAI CREEK
HARBOUR

BAYSHORE AT
CREEK BEACH

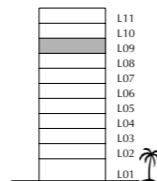
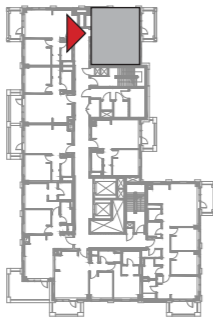
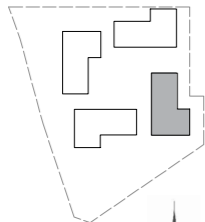
BUILDING 3

LEVEL 9

UNIT 902

1 BEDROOM

APARTMENT AREA	56.94 SQ.M.	612.90 SQ.FT.
BALCONY AREA	7.40 SQ.M.	79.65 SQ.FT.
TOTAL AREA	64.34 SQ.M.	692.55 SQ.FT.



FLOOR PLAN 1. All dimensions are in imperial and metric, and measured from finish to finish excluding construction tolerances. 2. All materials, dimensions, and drawings are approximate only. 3. Information is subject to change without notice, at developer's absolute discretion. 4. Actual area may vary from the stated area. 5. Drawings not to scale. 6. All images used are for illustrative purpose only and do not represent the actual size, features, specifications, fittings, and furnishings. 7. The developer reserves the right to make revisions / alterations, at it's a absolute discretion, without any liability whatsoever.

EMAAR

DUBAI CREEK
HARBOUR

BAYSHORE AT
CREEK BEACH

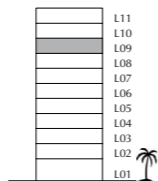
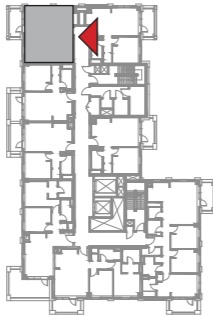
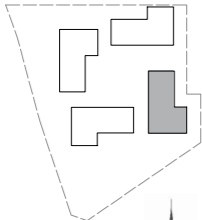
BUILDING 3

LEVEL 9

UNIT 903

1 BEDROOM

APARTMENT AREA	56.67 SQ.M.	609.99 SQ.FT.
BALCONY AREA	7.40 SQ.M.	79.65 SQ.FT.
TOTAL AREA	64.07 SQ.M.	689.64 SQ.FT.



FLOOR PLAN 1. All dimensions are in imperial and metric, and measured from finish to finish excluding construction tolerances. 2. All materials, dimensions, and drawings are approximate only. 3. Information is subject to change without notice, at developer's absolute discretion. 4. Actual area may vary from the stated area. 5. Drawings not to scale. 6. All images used are for illustrative purpose only and do not represent the actual size, features, specifications, fittings, and furnishings. 7. The developer reserves the right to make revisions / alterations, at it's a absolute discretion, without any liability whatsoever.

EMAAR

DUBAI CREEK
HARBOUR

BAYSHORE AT
CREEK BEACH

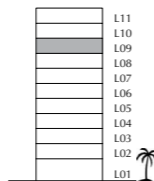
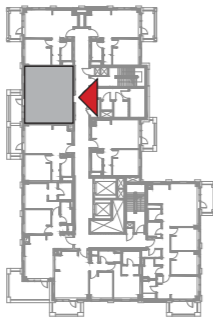
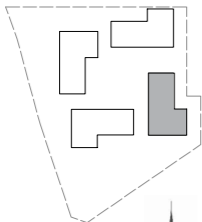
BUILDING 3

LEVEL 9

UNIT 904

1 BEDROOM

APARTMENT AREA	55.10 SQ.M.	593.09 SQ.FT.
BALCONY AREA	8.40 SQ.M.	90.42 SQ.FT.
TOTAL AREA	63.50 SQ.M.	683.51 SQ.FT.



FLOOR PLAN 1. All dimensions are in imperial and metric, and measured from finish to finish excluding construction tolerances. 2.All materials, dimensions, and drawings are approximate only. 3. Information is subject to change without notice, at developer's absolute discretion. 4. Actual area may vary from the stated area. 5. Drawings not to scale. 6. All images used are for illustrative purpose only and do not represent the actual size, features, specifications, fittings, and furnishings. 7. The developer reserves the right to make revisions / alterations, at it's a absolute discretion, without any liability whatsoever.

DUBAI CREEK
HARBOUR

BAYSHORE AT
CREEK BEACH

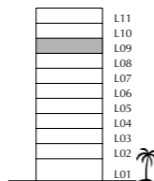
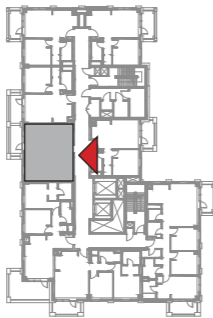
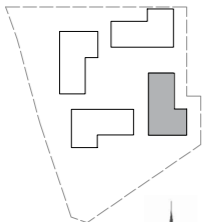
BUILDING 3

LEVEL 9

UNIT 905

1 BEDROOM

APARTMENT AREA	54.95 SQ.M.	591.48 SQ.FT.
BALCONY AREA	8.40 SQ.M.	90.42 SQ.FT.
TOTAL AREA	63.35 SQ.M.	681.90 SQ.FT.



FLOOR PLAN 1. All dimensions are in imperial and metric, and measured from finish to finish excluding construction tolerances. 2. All materials, dimensions, and drawings are approximate only. 3. Information is subject to change without notice, at developer's absolute discretion. 4. Actual area may vary from the stated area. 5. Drawings not to scale. 6. All images used are for illustrative purpose only and do not represent the actual size, features, specifications, fittings, and furnishings. 7. The developer reserves the right to make revisions / alterations, at it's a absolute discretion, without any liability whatsoever.

EMAAR

DUBAI CREEK
HARBOUR

BAYSHORE AT
CREEK BEACH

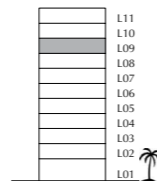
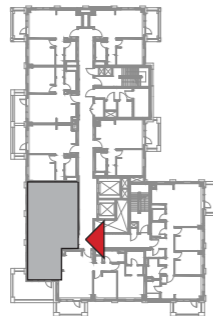
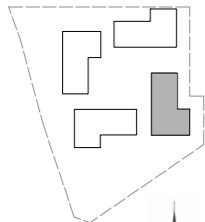
BUILDING 3

LEVEL 9

UNIT 906

2 BEDROOM

APARTMENT AREA	82.73 SQ.M.	890.50 SQ.FT.
BALCONY AREA	18.48 SQ.M.	198.92 SQ.FT.
TOTAL AREA	101.21 SQ.M.	1089.42 SQ.FT.



FLOOR PLAN 1. All dimensions are in imperial and metric, and measured from finish to finish excluding construction tolerances. 2.All materials, dimensions, and drawings are approximate only. 3. Information is subject to change without notice, at developer's absolute discretion. 4. Actual area may vary from the stated area. 5. Drawings not to scale. 6. All images used are for illustrative purpose only and do not represent the actual size, features, specifications, fittings, and furnishings. 7. The developer reserves the right to make revisions / alterations, at it's a absolute discretion, without any liability whatsoever.

EMAAR

DUBAI CREEK
HARBOUR

BAYSHORE AT
CREEK BEACH

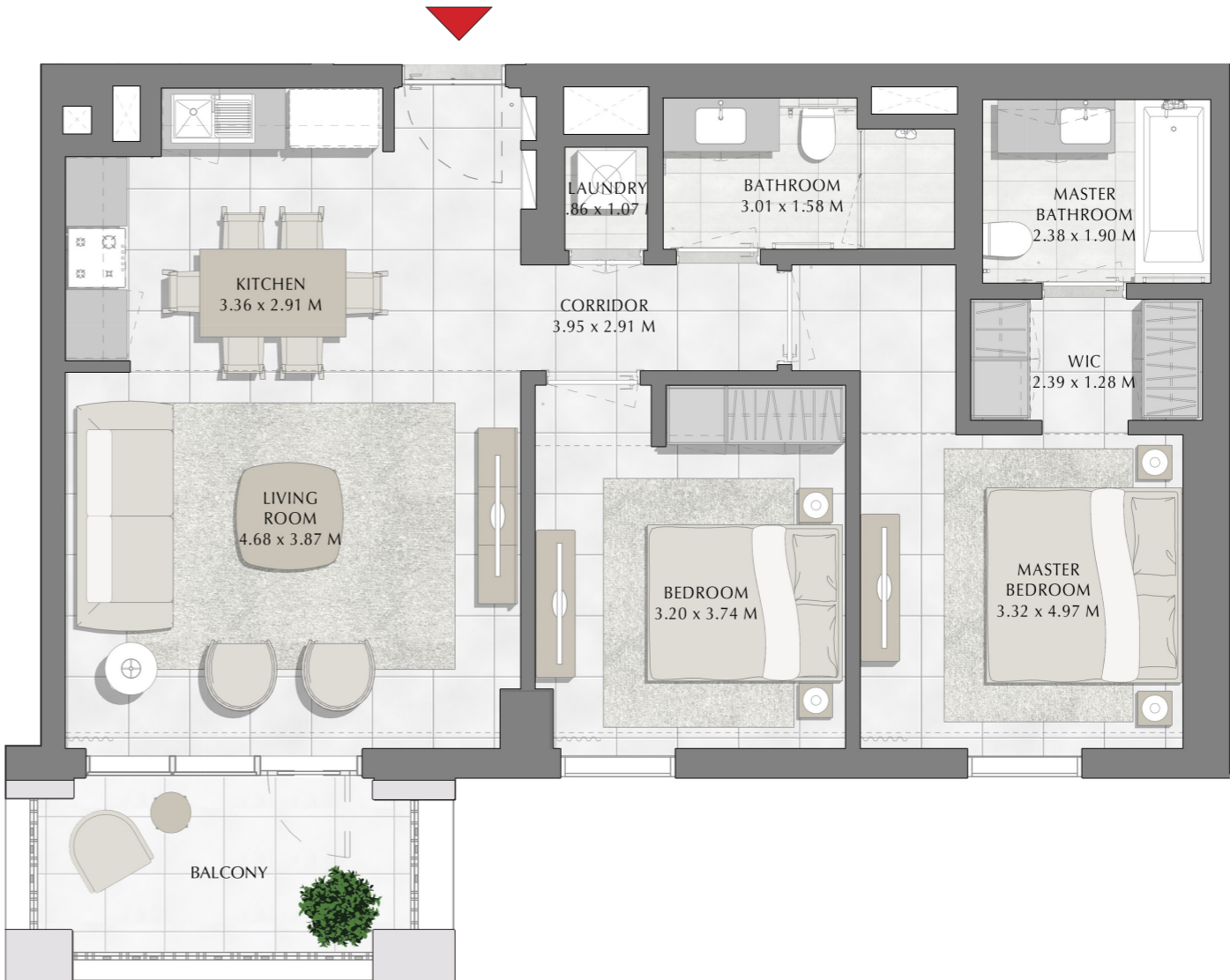
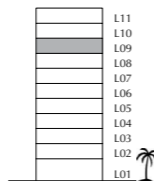
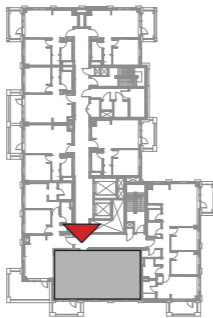
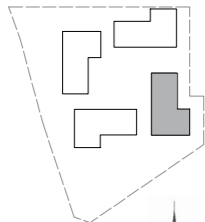
BUILDING 3

LEVEL 9

UNIT 907

2 BEDROOM

APARTMENT AREA	83.48 SQ.M.	898.57 SQ.FT.
BALCONY AREA	7.40 SQ.M.	79.65 SQ.FT.
TOTAL AREA	90.88 SQ.M.	978.22 SQ.FT.



FLOOR PLAN 1. All dimensions are in imperial and metric, and measured from finish to finish excluding construction tolerances. 2. All materials, dimensions, and drawings are approximate only. 3. Information is subject to change without notice, at developer's absolute discretion. 4. Actual area may vary from the stated area. 5. Drawings not to scale. 6. All images used are for illustrative purpose only and do not represent the actual size, features, specifications, fittings, and furnishings. 7. The developer reserves the right to make revisions / alterations, at its absolute discretion, without any liability whatsoever.

EMAAR

DUBAI CREEK
HARBOUR

BAYSHORE AT
CREEK BEACH

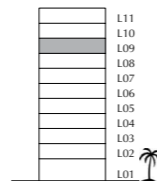
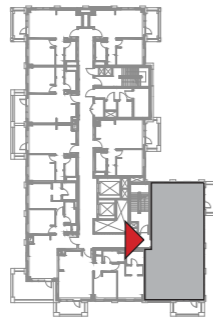
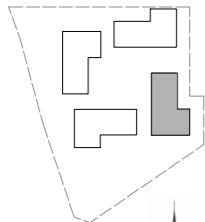
BUILDING 3

LEVEL 9

UNIT 908

3 BEDROOM

APARTMENT AREA	123.57 SQ.M.	1330.10 SQ.FT.
BALCONY AREA	14.79 SQ.M.	159.20 SQ.FT.
TOTAL AREA	138.36 SQ.M.	1489.30 SQ.FT.



FLOOR PLAN 1. All dimensions are in imperial and metric, and measured from finish to finish excluding construction tolerances. 2.All materials, dimensions, and drawings are approximate only. 3. Information is subject to change without notice, at developer's absolute discretion. 4. Actual area may vary from the stated area. 5. Drawings not to scale. 6. All images used are for illustrative purpose only and do not represent the actual size, features, specifications, fittings, and furnishings. 7. The developer reserves the right to make revisions / alterations, at its absolute discretion, without any liability whatsoever.

EMAAR

DUBAI CREEK
HARBOUR

BAYSHORE AT
CREEK BEACH

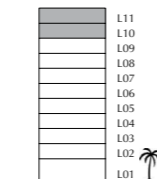
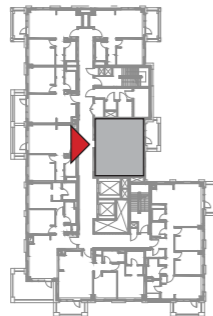
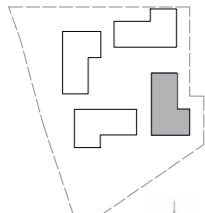
BUILDING 3

LEVEL 10, 11

UNIT 1001, 1101

1 BEDROOM

APARTMENT AREA	55.42 SQ.M.	596.54 SQ.FT.
BALCONY AREA	7.60 SQ.M.	81.81 SQ.FT.
TOTAL AREA	63.02 SQ.M.	678.35 SQ.FT.



FLOOR PLAN 1. All dimensions are in imperial and metric, and measured from finish to finish excluding construction tolerances. 2. All materials, dimensions, and drawings are approximate only. 3. Information is subject to change without notice, at developer's absolute discretion. 4. Actual area may vary from the stated area. 5. Drawings not to scale. 6. All images used are for illustrative purpose only and do not represent the actual size, features, specifications, fittings, and furnishings. 7. The developer reserves the right to make revisions / alterations, at its absolute discretion, without any liability whatsoever.

EMAAR

DUBAI CREEK
HARBOUR

BAYSHORE AT
CREEK BEACH

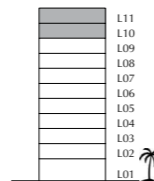
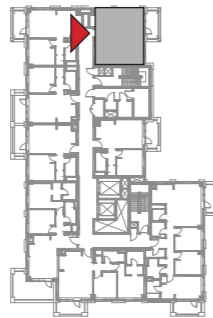
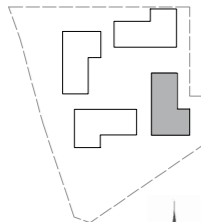
BUILDING 3

LEVEL 10, 11

UNIT 1002, 1102

1 BEDROOM

APARTMENT AREA	56.94 SQ.M.	612.90 SQ.FT.
BALCONY AREA	7.40 SQ.M.	79.65 SQ.FT.
TOTAL AREA	64.34 SQ.M.	692.55 SQ.FT.



FLOOR PLAN 1. All dimensions are in imperial and metric, and measured from finish to finish excluding construction tolerances. 2. All materials, dimensions, and drawings are approximate only. 3. Information is subject to change without notice, at developer's absolute discretion. 4. Actual area may vary from the stated area. 5. Drawings not to scale. 6. All images used are for illustrative purpose only and do not represent the actual size, features, specifications, fittings, and furnishings. 7. The developer reserves the right to make revisions / alterations, at it's a absolute discretion, without any liability whatsoever.

EMAAR

DUBAI CREEK
HARBOUR

BAYSHORE AT
CREEK BEACH

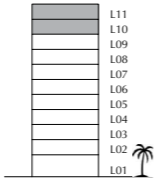
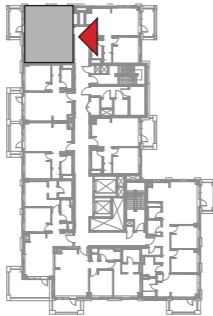
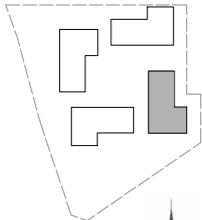
BUILDING 3

LEVEL 10, 11

UNIT 1003, 1103

1 BEDROOM

APARTMENT AREA	56.67 SQ.M.	609.99 SQ.FT.
BALCONY AREA	7.40 SQ.M.	79.65 SQ.FT.
TOTAL AREA	64.07 SQ.M.	689.64 SQ.FT.



FLOOR PLAN 1. All dimensions are in imperial and metric, and measured from finish to finish excluding construction tolerances. 2. All materials, dimensions, and drawings are approximate only. 3. Information is subject to change without notice, at developer's absolute discretion. 4. Actual area may vary from the stated area. 5. Drawings not to scale. 6. All images used are for illustrative purpose only and do not represent the actual size, features, specifications, fittings, and furnishings. 7. The developer reserves the right to make revisions / alterations, at it's a absolute discretion, without any liability whatsoever.

EMAAR

DUBAI CREEK
HARBOUR

BAYSHORE AT
CREEK BEACH

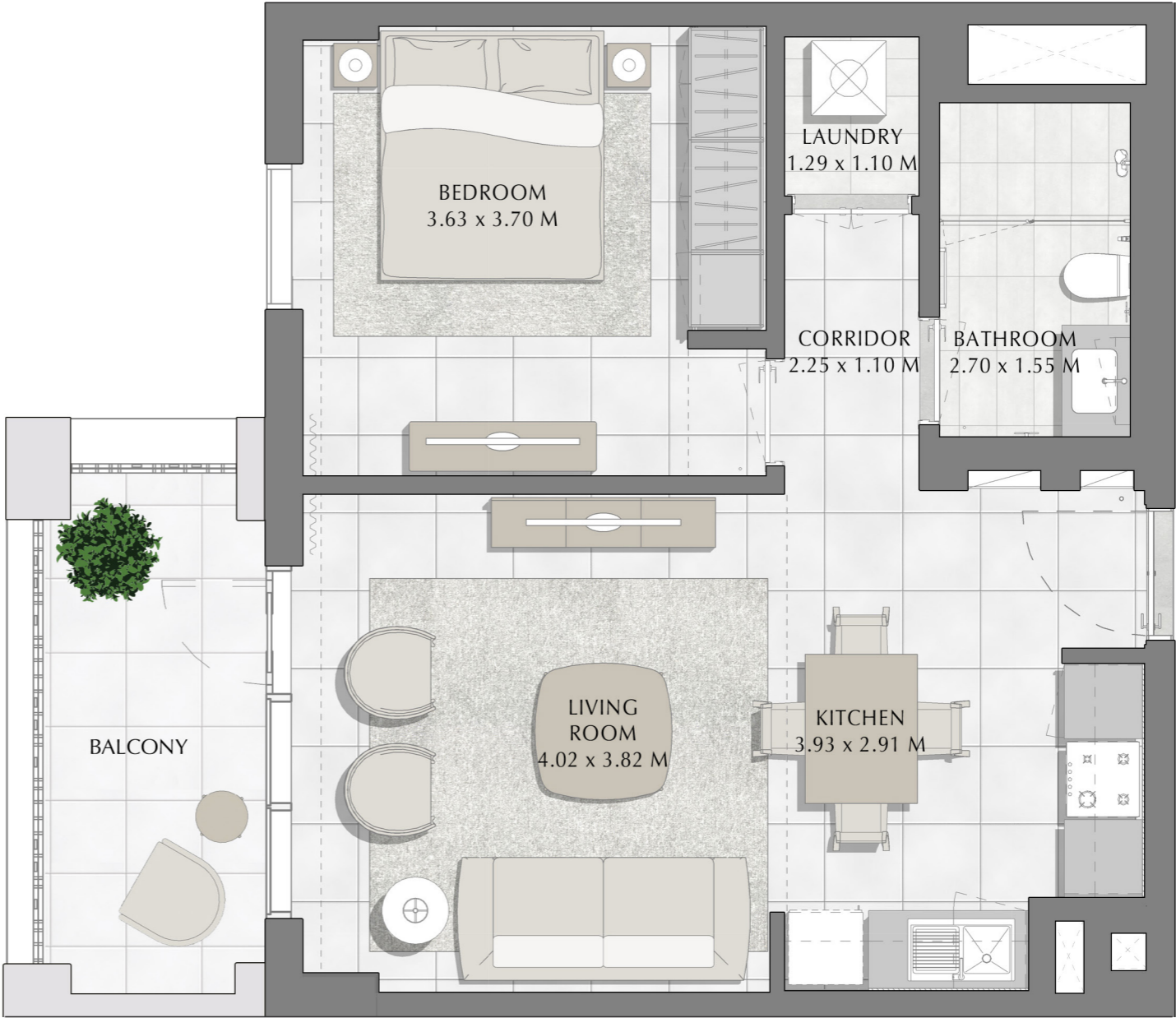
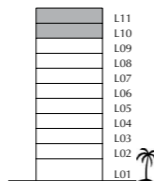
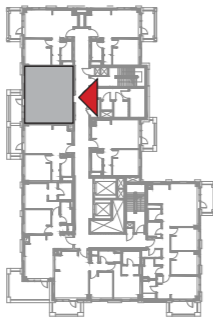
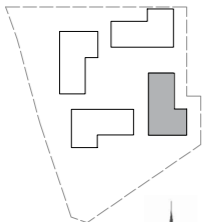
BUILDING 3

LEVEL 10, 11

UNIT 1004, 1104

1 BEDROOM

APARTMENT AREA	55.10 SQ.M.	593.09 SQ.FT.
BALCONY AREA	8.40 SQ.M.	90.42 SQ.FT.
TOTAL AREA	63.50 SQ.M.	683.51 SQ.FT.



FLOOR PLAN 1. All dimensions are in imperial and metric, and measured from finish to finish excluding construction tolerances. 2. All materials, dimensions, and drawings are approximate only. 3. Information is subject to change without notice, at developer's absolute discretion. 4. Actual area may vary from the stated area. 5. Drawings not to scale. 6. All images used are for illustrative purpose only and do not represent the actual size, features, specifications, fittings, and furnishings. 7. The developer reserves the right to make revisions / alterations, at it's a absolute discretion, without any liability whatsoever.

EMAAR

DUBAI CREEK
HARBOUR

BAYSHORE AT
CREEK BEACH

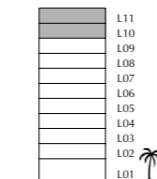
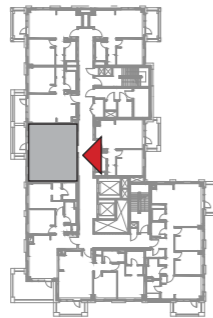
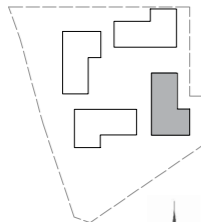
BUILDING 3

LEVEL 10, 11

UNIT 1005, 1105

1 BEDROOM

APARTMENT AREA	54.95 SQ.M.	591.48 SQ.FT.
BALCONY AREA	8.40 SQ.M.	90.42 SQ.FT.
TOTAL AREA	63.35 SQ.M.	681.90 SQ.FT.



FLOOR PLAN 1. All dimensions are in imperial and metric, and measured from finish to finish excluding construction tolerances. 2.All materials, dimensions, and drawings are approximate only. 3. Information is subject to change without notice, at developer's absolute discretion. 4. Actual area may vary from the stated area. 5. Drawings not to scale. 6. All images used are for illustrative purpose only and do not represent the actual size, features, specifications, fittings, and furnishings. 7. The developer reserves the right to make revisions / alterations, at it's a absolute discretion, without any liability whatsoever.

DUBAI CREEK
HARBOUR

BAYSHORE AT
CREEK BEACH

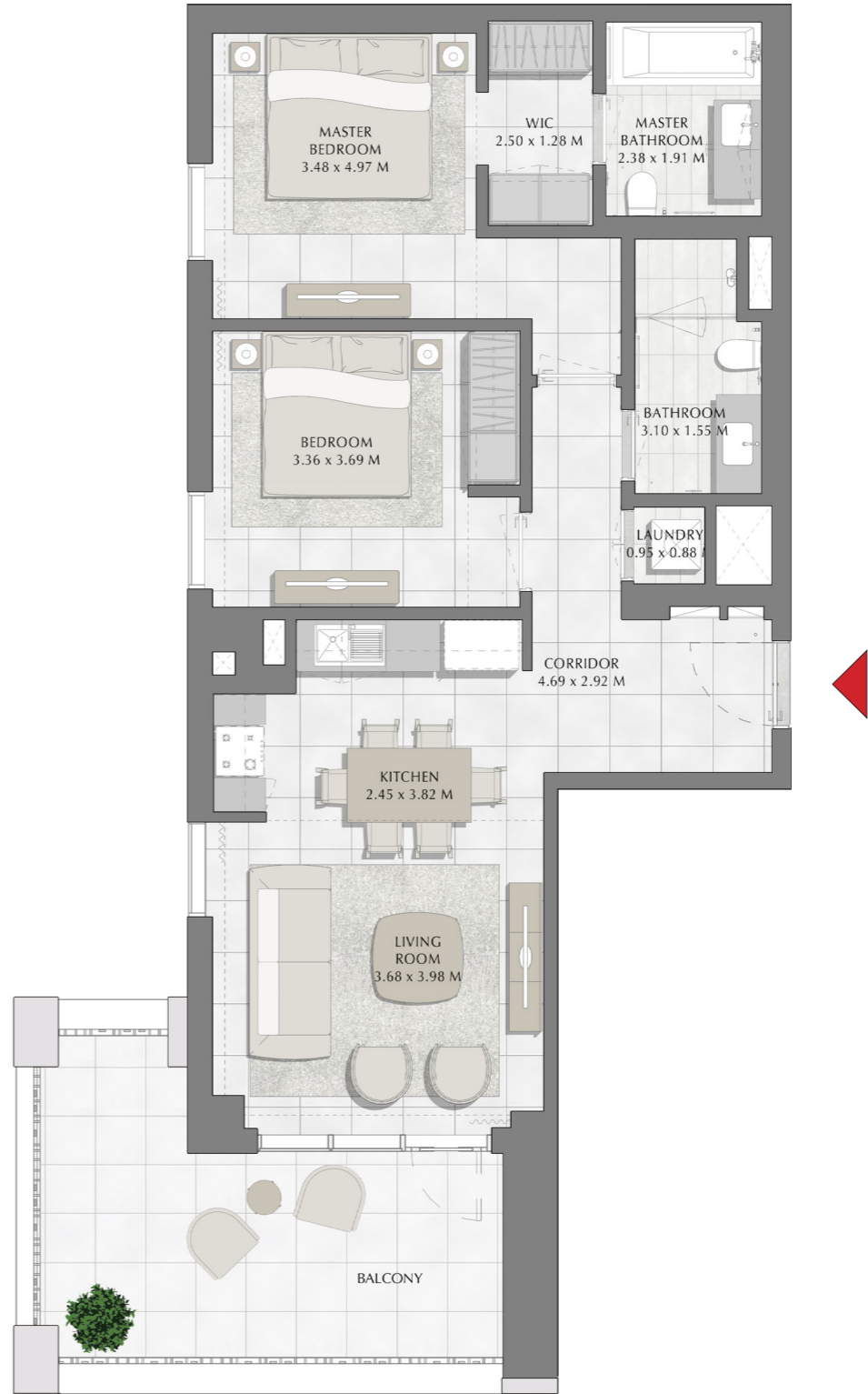
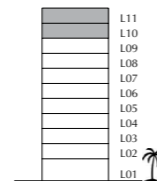
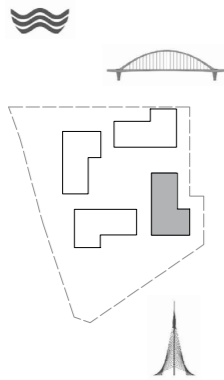
BUILDING 3

LEVEL 10, 11

UNIT 1006, 1106

2 BEDROOM

APARTMENT AREA	82.73 SQ.M.	890.50 SQ.FT.
BALCONY AREA	18.48 SQ.M.	198.92 SQ.FT.
TOTAL AREA	101.21 SQ.M.	1089.42 SQ.FT.



FLOOR PLAN 1. All dimensions are in imperial and metric, and measured from finish to finish excluding construction tolerances. 2.All materials, dimensions, and drawings are approximate only. 3. Information is subject to change without notice, at developer's absolute discretion. 4. Actual area may vary from the stated area. 5. Drawings not to scale. 6. All images used are for illustrative purpose only and do not represent the actual size, features, specifications, fittings, and furnishings. 7. The developer reserves the right to make revisions / alterations, at it's a absolute discretion, without any liability whatsoever.

EMAAR

DUBAI CREEK
HARBOUR

BAYSHORE AT
CREEK BEACH

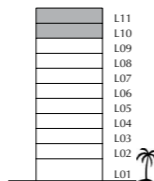
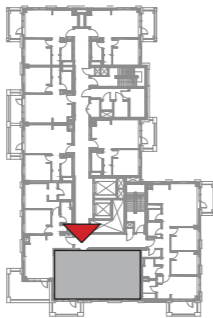
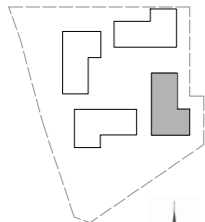
BUILDING 3

LEVEL 10, 11

UNIT 1007, 1107

2 BEDROOM

APARTMENT AREA	83.48 SQ.M.	898.57 SQ.FT.
BALCONY AREA	7.40 SQ.M.	79.65 SQ.FT.
TOTAL AREA	90.88 SQ.M.	978.22 SQ.FT.



FLOOR PLAN 1. All dimensions are in imperial and metric, and measured from finish to finish excluding construction tolerances. 2. All materials, dimensions, and drawings are approximate only. 3. Information is subject to change without notice, at developer's absolute discretion. 4. Actual area may vary from the stated area. 5. Drawings not to scale. 6. All images used are for illustrative purpose only and do not represent the actual size, features, specifications, fittings, and furnishings. 7. The developer reserves the right to make revisions / alterations, at its absolute discretion, without any liability whatsoever.

EMAAR

DUBAI CREEK
HARBOUR

BAYSHORE AT
CREEK BEACH

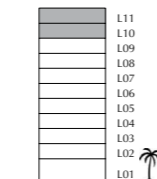
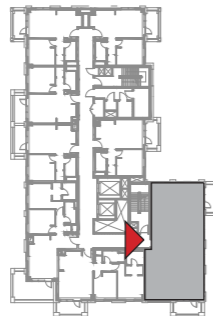
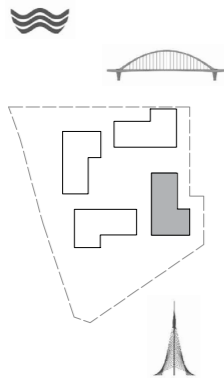
BUILDING 3

LEVEL 10, 11

UNIT 1008, 1108

3 BEDROOM

APARTMENT AREA	123.57 SQ.M.	1330.10 SQ.FT.
BALCONY AREA	14.79 SQ.M.	159.20 SQ.FT.
TOTAL AREA	138.36 SQ.M.	1489.30 SQ.FT.



FLOOR PLAN 1. All dimensions are in imperial and metric, and measured from finish to finish excluding construction tolerances. 2. All materials, dimensions, and drawings are approximate only. 3. Information is subject to change without notice, at developer's absolute discretion. 4. Actual area may vary from the stated area. 5. Drawings not to scale. 6. All images used are for illustrative purpose only and do not represent the actual size, features, specifications, fittings, and furnishings. 7. The developer reserves the right to make revisions / alterations, at its absolute discretion, without any liability whatsoever.

EMAAR